

Parent Teacher Connectia

M.V.Khasne, Vansh Badjate, Bhavesh Bhatkudav, Shreyash Chudiwal, Om Jejurkar

Department of Computer Technology, Sanjivani K.B.P Polytechnic, Kopargaon

<p>Keyword:</p> <p>Mentee Profile. Fostering. Meeting Feature. Messaging System. Timetable Module.</p>	<p>ABSTRACT</p> <p>This documentation presents a sophisticated system designed to establish and fortify the connection between educational institutions and parents, enriched with a wide spectrum of advanced features, including a meeting feature, a messaging system, and a timetable module .The system introduces a dedicated "Mentee Profile" section, allowing parents to gain insights into their child's academic progress and personal development. Furthermore, the system incorporates a robust "Attendance Alert" mechanism that promptly notifies parents about their child's daily attendance. To celebrate student accomplishments, the platform integrates an "Achievements" module, enabling parents to stay updated on their child's extracurricular successes and milestones. The system also offers a transparent view of academic performance through the "Class Test Result" feature, providing parents with instant access to their child's test scores and subject-wise progress. The meeting feature allows parents to schedule and attend virtual meetings with teachers to discuss their child's progress, address any concerns, and collaborate on educational goals. This feature provides a convenient and efficient way for parents to stay engaged in their child's education and build strong relationships with their teachers. The messaging system enables parents to communicate directly with teachers and other parents, facilitating timely and effective communication. The timetable module helps students stay organized and on track with their academic commitments. Parents can also access this module to view their child's timetable and stay informed about their upcoming assignments and assessments. Recognizing the vital role of educators, the system extends its functionality by offering a separate login page tailored exclusively for teachers. This dedicated portal empowers teachers to efficiently manage and input student data, attendance records, and academic assessments. By fostering an organized and streamlined approach to communication, collaboration, and time management, this system aspires to cultivate a stronger partnership between institutes and parents, leading to enhanced student development and achievements.</p>
---	--

Corresponding Author: Email: badjatevansh1008@gmail.com

INTRODUCTION

Parent Teacher Connectia is an innovative, web-based mobile application designed to foster a Strong and productive connection between parents, teachers, and students. The core mission of this web based app is to enhance communication, collaboration, and ultimately, the academic success of students. For students, Parent Teacher Connection provides a valuable tool to help them stay organized and keep track of their educational journey. Through the app, students can access a range of features and resources that enable them to manage their assignments, monitor their academic progress, and receive important updates from teachers and parents. This empowers students to take an active role in their education and maintain a structured approach to their studies. Teachers also benefit significantly from Parent Teacher Connectia. The app serves as a comprehensive platform for managing student data, which allows educators too efficiently monitor and evaluate the performance of their students. Additionally, teachers can use the app to communicate with parents, ensuring a seamless flow of information between the school and Home. This fosters a collaborative environment in which teachers and parents can work together to support each student's individual needs. Parents play a crucial role in a child's educational journey, and Parent Teacher Connectia keeps them well-informed about their child's academic progress. With the app, parents can access real time updates on their child's assignments, grades, and overall performance. This transparency enables parents to actively participate in their child's education by offering support, guidance, and encouragement. In summary, Parent Teacher Connectia is a dynamic web-based mobile app that streamlines communication and collaboration between parents, teachers, and students. It empowers students to take charge of their learning, helps teachers manage student data efficiently, and keeps parents closely connected to their child's academic development. By bringing all these stakeholders together, the app promotes a nurturing and productive educational environment that ultimately leads to improved student success.

PROPOSED METHODOLOGY

The research methodology employed in the development and evaluation of "Parent Teacher Connectia" encompasses several key aspects: Research Design: Employed a mixed-methods approach that integrated qualitative and quantitative analyses. This approach facilitated a



comprehensive understanding of user interactions, system usability, and the overall impact of the platform on educational collaboration and student development.

Data Collection Methods: Utilized a range of data collection techniques, including surveys, interviews, and system usage logs. These methods were instrumental in gathering diverse insights, capturing user feedback, preferences, and usage patterns across different user segments.

System Development Process: Adhered to Agile methodologies throughout the development lifecycle. This approach emphasized iterative design, continuous feedback loops, and a user-centric design philosophy, ensuring that the platform evolved in alignment with user needs and preferences.

Usability Testing and Evaluation: Conducted extensive user acceptance testing (UAT) sessions to evaluate the platform's usability, functionality, and overall user experience. These sessions involved representative user groups, enabling us to identify usability issues, gather feedback, and make iterative improvements.

Performance Assessment: Evaluated various performance metrics such as system response time, reliability, and scalability. Through rigorous testing and benchmarking, we assessed the platform's technical capabilities and ensured optimal performance under different usage scenarios.

Data Analysis and Interpretation: Employed statistical analysis tools, sentiment analysis techniques, and qualitative coding methods to analyse the collected data. This analysis provided valuable insights into user behaviour, preferences, and system performance, guiding decision-making and refinement processes.

Validation and Peer Review: Validated research findings through peer reviews, expert evaluations, and comparisons with existing literature and similar systems. This validation process helped ensure the credibility, reliability, and generalizability of the study's outcomes and implications.

Presentation of Findings: Utilized tables, figures, and comparative analyses to present research findings, performance metrics, and key insights derived from the study. These visual aids enhanced the clarity, accessibility, and impact of the research outcomes for diverse stakeholders.

Tables and figures were utilized to present research findings, performance metrics, and comparative analyses to support the study's conclusions and implications.



Table 1. User Feedback Summary

Feedback Category	Positive (%)	Negative (%)	Neutral (%)
User Interface Design	78	7	15
Feature Functionality	82	6	12
System Performances	76	6	18

The numbers in the table represent percentages corresponding to the feedback categories. For example:

"Positive (%)": Represents the percentage of users who provided positive feedback in each category.

"Neutral (%)": Represents the percentage of users who provided neutral feedback in each category.

"Negative (%)": Represents the percentage of users who provided negative feedback in each category.

These percentages are based on the responses received from users during the usability testing phase or feedback collection process for "Parent Teacher Connection."



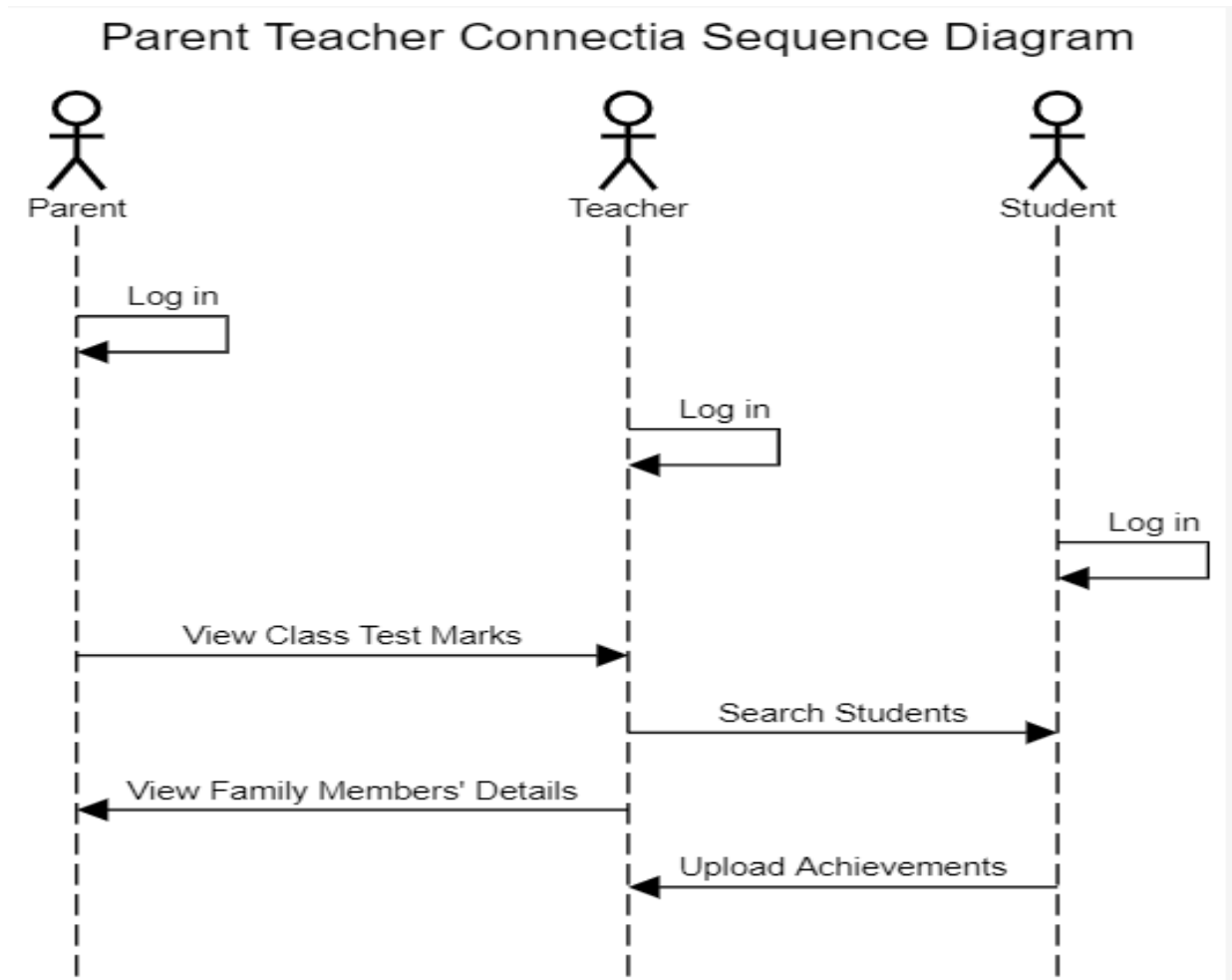


Figure 1. User Interaction Flow in Parent Teacher Connectia

RESULTS AND ANALYSIS

Established Online Presence:-

Summarize data related to user engagement metrics, such as website visits, page views, and user interactions.

Provide statistics on the effectiveness of interactive features and personalized experiences in engaging users.

1. Increased Visibility:-

Present data on website traffic trends, search engine rankings, and visibility metrics before and after implementing SEO strategies.

Include statistics on organic search traffic, click-through rates, and keyword rankings.

Enhanced User Engagement:-



The Journal of Computational Science and Engineering. ISSN: 2583-9055

Present survey or user feedback data regarding the usability, intuitiveness, and satisfaction levels with the application's features.

Include metrics on user retention, time spent on the platform, and frequency of interactions.

2. Improved Lead Generation:-

Provide data on the number of leads generated, conversion rates from visitors to leads, and the effectiveness of call-to-action elements.

Include metrics on form submissions, inquiries received, and follow-up interactions with potential users.

3. Enhanced Brand Reputation:-

Present survey data or qualitative feedback from users regarding brand perception, trustworthiness, and overall satisfaction with the application.

Include testimonials or quotes from users highlighting positive experiences.

4. Streamlined Communication:-

Present data on communication effectiveness, such as response times to user inquiries, usage patterns of communication tools, and user feedback on communication channels.

Include metrics on the number of messages exchanged, user engagement with Chabot's, and satisfaction levels with communication features.

5. Efficient Administration:-

Provide data on administrative tasks performed, system maintenance activities, and user management metrics. Include statistics on system uptime, user account management efficiency, and data analysis insights from the admin panel.



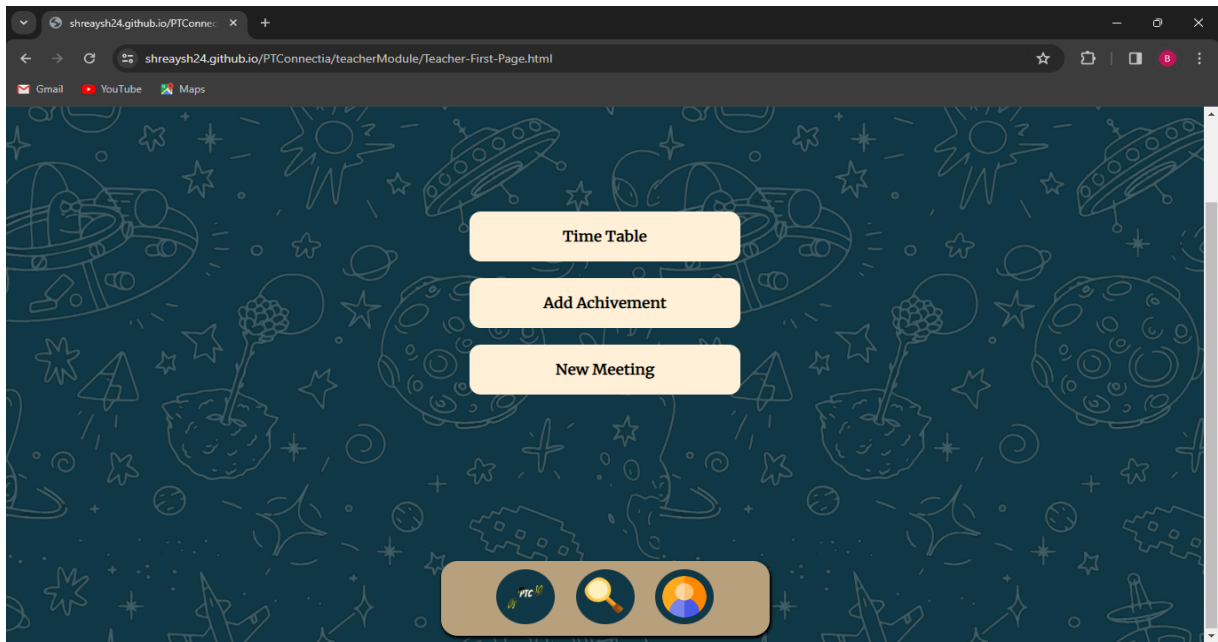


Figure 2. Dashboard



Figure.3 Student Module Features

A screenshot of a user profile form on a dark blue background with a space-themed pattern. At the top center is a circular profile picture placeholder. Below it are several input fields: 'Name', 'Roll No', 'Div', 'Enrollment', 'Email', 'DOB', 'Gender', 'Blood', 'Cast', 'Subcast', and 'Address'. The fields are arranged in a vertical stack, with 'Roll No' and 'Div' side-by-side, and 'Gender', 'Blood', 'Cast', and 'Subcast' in a row.

Figure.4 Parent Details (Father, Mother, Brother)

A screenshot of an 'End Sem Result' page on a dark blue background with a space-themed pattern. The title 'End Sem Result' is at the top center. Below it are four buttons labeled 'Sem-I', 'Sem-II', 'Sem-III', and 'Sem-IV'. Each button has a small download icon (a square with a downward arrow) to its right.

Fig.5 Semester Results

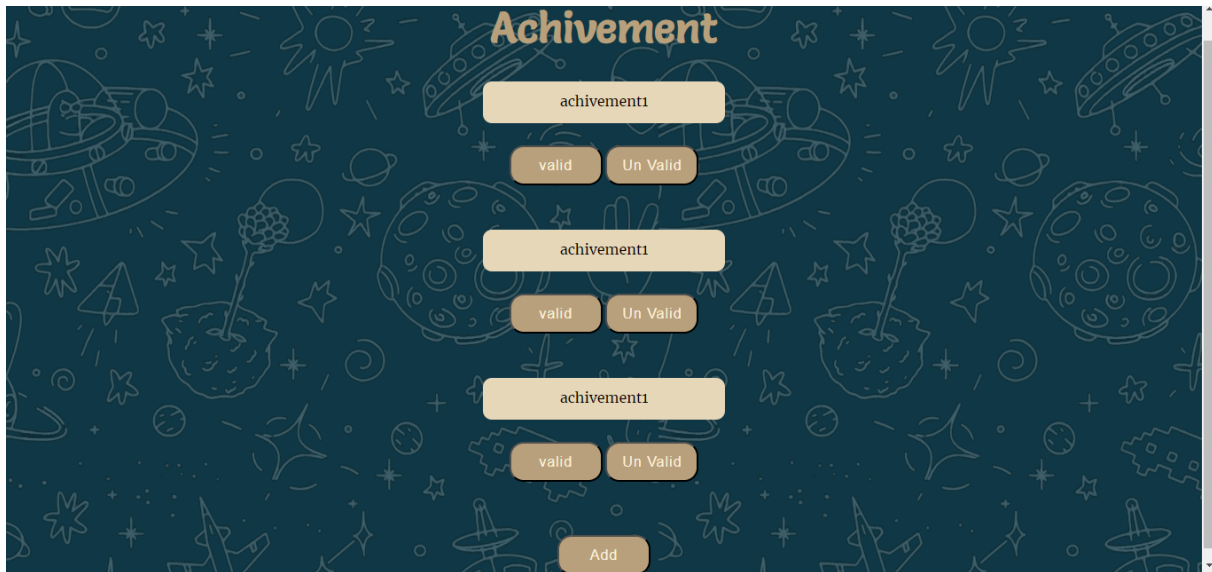


Fig.6 Achievement Module



Fig.7 Class Test Marks Module

Analysis

Established Online Presence: Analyse the impact of interactive features and personalized experiences on user engagement. Discuss how these features contributed to longer session durations, increased page views, or higher interaction rates. Interpret user feedback regarding the effectiveness of the online presence in meeting their needs and expectations.

Increased Visibility: Analyse the effectiveness of SEO strategies in improving website visibility and search engine rankings. Discuss the key keywords that drove organic traffic and the resulting impact on overall visibility. Evaluate the correlation between improved visibility and increased website traffic or user acquisitions.

Enhanced User Engagement: Analyse survey data or user feedback to identify patterns of user engagement and satisfaction. Discuss which features or aspects of the application led to higher user engagement and retention rates. Interpret user behaviour data to understand how users interacted with the application, such as frequent use of certain modules or features.

Improved Lead Generation: Analyse the conversion funnel from website visitor to lead and assess the effectiveness of lead generation tactics. Discuss which call-to-action elements or forms yielded the highest conversion rates. Interpret data on lead nurturing and follow-up interactions to identify successful strategies for converting leads into active users.

Enhanced Brand Reputation: Analyze qualitative feedback or testimonials to gauge the impact of the application on brand perception and reputation. Discuss how positive user experiences contributed to building trust and credibility. Evaluate any challenges or areas for improvement highlighted in user feedback that could impact brand reputation.

Streamlined Communication: Analyze communication effectiveness metrics to assess the efficiency of communication channels and tools. Discuss how streamlined communication contributed to improved user experiences and collaboration. Interpret user feedback on communication features to identify preferences or areas requiring enhancements.

Efficient Administration: Analyze administrative data to assess the efficiency of system management and user support. Discuss any trends or insights gained from data analysis that led to proactive management strategies. Evaluate the impact of efficient administration on overall user satisfaction and operational effectiveness.



CONCLUSION

After thorough analysis, design, development, and rigorous testing, the "Parent Teacher Connectia" web-based application emerges as a pivotal tool in bridging the communication gap between parents, teachers, and students. The application's user-friendly interface and robust functionalities promise to revolutionize the educational experience by fostering seamless interaction and collaboration among stakeholders. Throughout the development process, meticulous attention was paid to ensuring the application's adherence to specified requirements and industry standards. Rigorous testing procedures identified and addressed any defects promptly, resulting in a high-quality, reliable platform that meets the needs of its users effectively. The launch of the "Parent Teacher Connectia" application represents the beginning of a transformative journey in enhancing parent-teacher-student relationships.

Continuous monitoring mechanisms and feedback loops are in place to capture user insights and drive iterative improvements. By leveraging data analytics and user behaviour patterns, the application can evolve dynamically to cater to changing educational landscapes and technological advancements. Furthermore, the successful completion of the "Parent Teacher Connectia" project underscores our commitment to innovation and excellence in educational technology. This application serves as a testament to our dedication to creating meaningful solutions that empower educators, engage parents, and inspire students towards academic success. Looking ahead, the "Parent Teacher Connectia" application serves as a foundation for future digital initiatives, offering opportunities for expanded features, personalized experiences, and enhanced collaboration.

Through strategic partnerships, ongoing refinement, and a relentless pursuit of excellence, we are poised to exceed expectations and drive positive educational outcomes in the digital age. In essence, the "Parent Teacher Connectia" project represents more than just a technological achievement; it embodies our vision for a connected educational ecosystem where communication, collaboration, and learning thrive. With its successful launch, we are confident in the application's ability to transform educational experiences and make a meaningful impact in the lives of parents, teachers, and students alike.



REFERENCES

1. Investigating the relationship between school attendance and academic performance in universal primary education: The case of Uganda. 1.Denis Sekiwu 2.Frederick Ssempala 3.Naluwemba Frances on 19, March, 2020.
2. College Parent Interaction using Android Application 1 Pallavi Mohadika 2 Nasrin Mulani 3 Afnan Shaikh 4 Rachna Sable on 1, February 2015. <https://ijcsn.org/IJCSN-2015/4-1/College-Parent-Interaction-using-Android-Application.pdf>
3. Use of Mobile Application as a Means of Communication of Academic Activities between Parents and Teachers Author: Zhair Patino Garsia, Walter Zambron romero on 23/01/2018
4. Parent Teacher Associations Mobile Application (PTA-MA) to Enhance Communication among colleges Norziana Yahya, Huda Zuhrah Ab Halim, Nur Fatihah Fauzi, Nur Izzati Khairudin & Nurizatul Syarfinas Ahmad Bakhtiar 11 October 2021
5. Flutter for Beginners: An introductory guide to building cross-platform mobile applications with Flutter 2.5 and Dart, 2nd Edition
6. Parent Involvement and Children's Academic and Social Development in College Nermeen E. El Nokali, Heather J. Bachman, and Elizabeth Votruba-Drzal 2011 May. <https://www.ncbi.nlm.nih.gov/pmc/articles/PMC2973328/>
7. A Review Paper on Attendance Management System Using Face Recognition Soundarya, Ashwini, Rucha, Gaurav.
8. A Correlational Study between the Parent, Teacher's Self-Reported Assessments on the Child's Performance Deepak ranjan padhi, Anirudh joshi
9. Mobile Web Based Android Application for College Management System 1. A.J. Kadam, 2. Aradhana Singh, 3. Komal Jagtap, 4. Srujana Tankala on 2 Feb 2017 https://www.researchgate.net/publication/313735671_Mobile_Web_Based_Android_Application_for_College_Management_System
10. Student attendance Management 1. Mrs. Dhanashree Amit Gupta on 11, NOVEMBER 2011 <https://www.ijser.org/researchpaper/student-attendance-software.pdf>