

StudySphere - Web Based Study Focus Application

1st Prof. Bhavana A. Khivsara
Computer Engineering
SNJB KBJ COE CHANDWAD
Nashik, India
khivsara.bacoe@snjb.org

2nd Mr. Yogesh C. Mokal
Computer Engineering
SNJB KBJ COE CHANDWAD
Nashik, India
mokalyogesh113@gmail.com

3rd Mr. Shreyas D. Wani
Computer Engineering
SNJB KBJ COE CHANDWAD
Nashik, India
wshreyas0@gmail.com

4th Miss. Priyanka B. Kandalkar
Computer Engineering
SNJB KBJ COE CHANDWAD
Nashik, India
kandalkarp37@gmail.com

5th Miss. Sejal S. Raka
Computer Engineering
SNJB KBJ COE CHANDWAD
Nashik, India
sejalraka3009@gmail.com

Abstract—In an era of globalized education and internet connectivity, STUDYSPHERE addresses the changing demands of students globally. The suggested program intends to build a virtual study environment that promotes collaborative learning and cross-cultural relationships. It underlines the need of creating a customized learning environment, complete with ambient music, to improve focus and productivity in the face of information overload. The app encourages accountability and a shared commitment to academic success by linking students with a global community. The project expands on existing study-focused apps by including tailored study environments, progress tracking, global community chat, guided mindful study sessions, complete study material, interesting quizzes, competitions, and personalized reminders. Structured work sessions, distraction-blocking technologies, adjustable study settings, goal tracking, task management integration, and focus-enhancing soundscapes are among the predicted effects, all of which contribute to improved learning outcomes and increased productivity. This app seeks to change the way students study by making it more collaborative, effective, and pleasant, regardless of location.

Keywords—STUDYSPHERE, virtual study environment, collaborative learning, webRTC, Socket, Authentication

I. INTRODUCTION

The development of study focus and its maintenance is a crucial skill that can significantly impact academic achievement. This skill can be honed through the adoption of productive study habits, the creation of a conducive study atmosphere, setting precise study goals, effective time management approaches, and the utilization of active learning techniques

These strategies collectively contribute to enhanced study focus, leading to improved educational outcome In the rapidly evolving educational landscape, technology advances and changing learning dynamics have given rise to independent learning. This approach empowers students to take ownership of their education by seeking information and skills outside traditional classrooms [4]. While independent learning offers flexibility and customization, it comes with unique challenges. Maintaining concentration, productivity, and a sense of community can be difficult for independent learners, particularly when transitioning from the structured

environment of a traditional classroom to an online, self-directed learning experience. Addressing these challenges is essential to provide independent students with the necessary tools and support.

Effective study techniques and habits not only contribute to improved focus but also yield tangible benefits in terms of academic achievement. Deeper comprehension of subject matter, enhanced grades, and higher test scores are outcomes that result from the application of these strategies. Furthermore, studying serves as the primary avenue for knowledge and skill acquisition, laying the foundation for personal development and lifelong learning.

”StudySphere” promotes a comprehensive approach to student success by acting as an immersive virtual learning community and environment. StudySphere is committed to improving self-directed learning by offering a platform where students may interact, work together, and independently pursue common learning goals. StudySphere’s community and support features foster a supportive atmosphere that invites students to exchange ideas, look for guidance, and work together on projects. Focus and productivity are crucial, and StudySphere places a strong emphasis on creating and sustaining productive study habits. The platform goes beyond traditional learning by incorporating mentoring and advice, facilitating a peer-driven support system that allows students to learn from one another’s experiences. Furthermore, StudySphere emphasizes goal-setting and motivation heavily, giving students the ability to create and meet milestones in their academic careers. All things considered, StudySphere is intended to be an all-encompassing and dynamic environment where students can succeed academically by utilizing a blend of self-directed study, community involvement, productivity tools, mentoring, and inspiration.

II. IMPACT OF FOCUS ON STUDIES

DuFour and Eaker’s book [1] offers a comprehensive guide to the concept of professional learning communities and their potential for capacity building in schools. It provides practical strategies for improving student learning through collaboration among educators.

The leadership facets of professional learning communities are explored in Hord, S. M., & Sommers, W. A.'s book [3], along with how they help educators and educational institutions become more capable of long-term growth.

The work of Michael Fullan [2] is foundational in the fields of capacity building and educational reform. This book offers insights into the intricate combination of organisational conditions, skills, motivation, and culture needed for successful educational transformation.

Watt's H. M. G. [5] work examines the roles of motivation, self-efficacy, and gender in educational and career decisions, offering insight into how students' study streams may affect their professional self-efficacy.

Zhai, Y. (2020) [6] overcoming COVID-19's obstacles for overseas students pursuing higher education In keeping with the document's principles, this research review investigates the effects of the COVID-19 epidemic on college students, focusing on their experiences with online learning and their sense of affiliation and belonging.

Fig 4 shows the Real time Chat System module in the GUI, enabling users to interact with one another. There are themes for both light and dark modes.

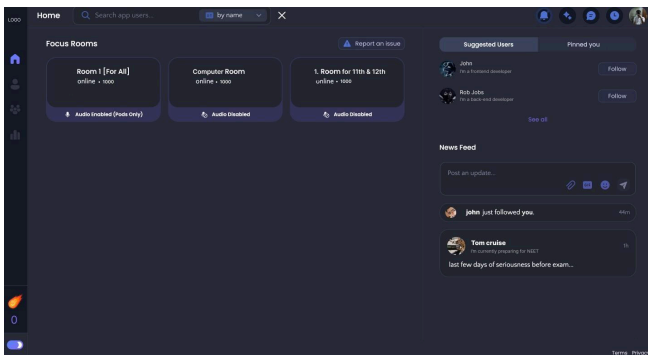
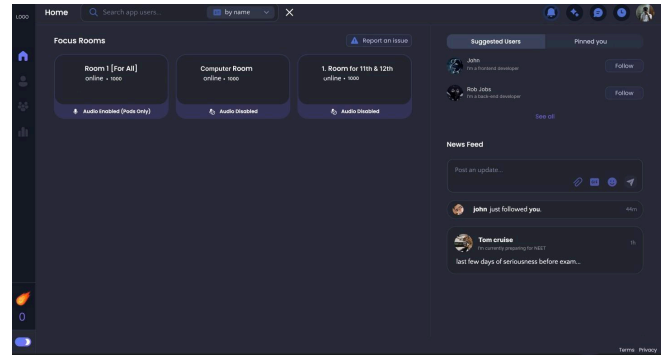


Fig. 1. Focus Rooms

The Focus Room module's GUI is displayed in Fig. 5. Users are able to join any focus room. Certain rooms require authentication, while others are open to the public.

Fig 4 shows the Real time Chat System module in the GUI, enabling users to interact with one another. There are themes for both light and dark modes.

The Focus Room module's GUI is displayed in Fig. 5. Users are able to join any focus room. Certain rooms require authentication, while others are open to the public.



III. PREVIOUS WORK

- StudyStream is a platform for creating a learning environment that suits your needs. You can register and access an active study room where you can focus and follow your work to ensure a productive and structured learning experience. Join a community of international students, join study groups and engage in thoughtful discussions to enhance your educational journey. StudyStream creates a supportive environment that recognizes the importance of collaboration and progress.[1]
- Pomofocus a custom Pomodoro timer that works on desktop and mobile browsers. The purpose of this app is to help you focus on what you're doing, whether it's studying, writing, or coding. This app is inspired by the Pomodoro Technique, a time management technique. [4]
- StudyVerse offers experiences through features: meeting rooms and blogs. The rooms are dynamic spaces of real-time communication, which encourage collaborative learning and debates around specific literary themes. You can enter several rooms, including an active study room and a study and environment room. interaction with colleagues. Blogs, on the other hand, give people the ability to express their opinions through in-depth articles, analysis, and reviews. By enabling multimedia integration, StudyVerse supports comprehensive text exploration and promotes new language discovery in a vibrant community of writers. Rooms and blogs create an immersive platform that encourages users to connect, learn and contribute.[3]

IV. PROPOSED METHODOLOGY

Our envisioned platform, "StudySphere," integrates a comprehensive suite of features to optimize your learning experience. At the core is the Focus Room, a dynamic environment designed for concentrated study sessions. Upon registration, users gain access to active study rooms, providing a structured and productive learning atmosphere. The real-time chat system within these Focus Rooms facilitates collaboration among international students, encouraging thoughtful discussions and mutual support to enhance your educational journey.

Complementing the Focus Room, StudySphere incorporates a robust Chat System, allowing seamless

communication and interaction among users. Join study groups, engage in collaborative discussions, and connect with fellow learners worldwide. This feature promotes a sense of community, recognizing the value of shared knowledge and collaborative progress

To enhance productivity and time management, StudySphere includes a customized Pomodoro Timer inspired by the Pomodoro Technique. This timer, named "PomoFocus," works seamlessly on both desktop and mobile browsers. Tailored for study, writing, or coding sessions, PomoFocus assists users in maintaining focus during designated work intervals, fostering efficient study habits.

In addition to the collaborative aspects, StudySphere provides a curated repository of Study Materials covering a wide range of subjects. From introductory content to advanced materials, users can access comprehensive study resources to support their academic pursuits. The platform recognizes the significance of diverse learning materials and aims to cater to the unique needs of each user.

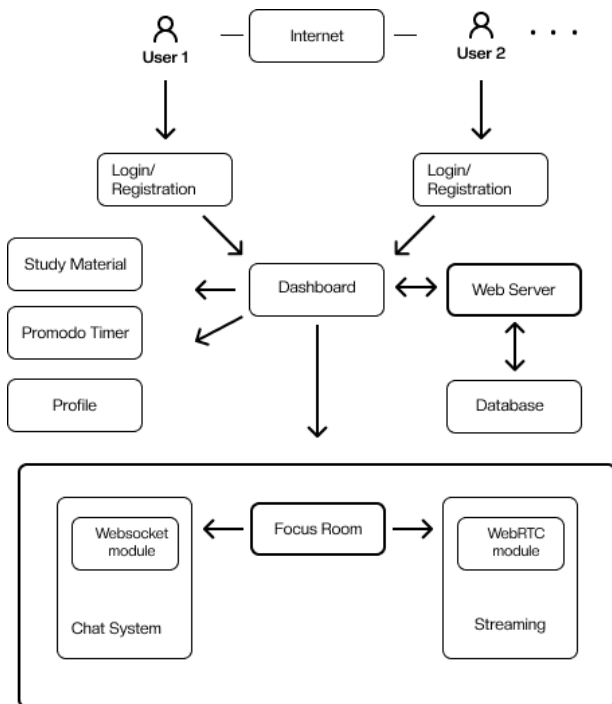


Fig. 3. Proposed System Architecture

StudySphere, with its integrated Focus Room, Chat System, Pomodoro Timer, and extensive Study Materials, offers a holistic and personalized approach to learning. By fostering collaboration, providing effective time management tools, and offering a rich repository of study materials, StudySphere aims to create an immersive and supportive educational environment, empowering users to excel in their academic endeavors.

V. WORKING MODULES

StudySphere operates on a user-centric and feature-rich working module designed to enhance the learning experience. Users begin by registering on the platform, gaining access to a variety of tools and resources tailored to support their academic journey.

StudySphere’s working module revolves around creating an immersive and supportive educational environment. By combining collaborative Focus Rooms, interactive chat systems, effective time management with PomoFocus, and a comprehensive collection of study materials, the platform aims to cater to the unique needs of each user, fostering an environment conducive to learning and academic success.

A. User Registration

Users register to create personalized profiles and gain access to StudySphere’s features. Registration is a gateway to the Focus Room, Chat System, PomoFocus Timer, and Study Materials.

- a) **Input:-** User provides registration details, including username, email, and password.
- b) **Processing:-**
 - Validate the provided information for completeness and correctness.
 - Generate a unique user ID.
 - Create a user profile with the provided details and the generated user ID.
 - Store the user profile securely in the database.
- c) **Output:-** Successful registration message. User gains access to StudySphere with the newly created account.

B. Access and Enter Focus Room

- User selects a specific active study room.
- Verify that the selected study room is currently active.
- Integrate WebRTC for Video Streaming in the Active Study Room:
- Implement video streaming functionality for real-time collaboration.
- Activate the chat system within the study room for user interaction.
- Ensure a stable and secure video streaming connection.
- User enters an active study room with video streaming capabilities.
- Engages in real-time collaboration with other users present in the study room.
- Can participate in discussions, study sessions, and collaborative activities.

WebRTC

WebRTC (Web Real-Time Communication) is a cutting- edge technology employed in StudySphere to

enable seamless and real-time video streaming within the Focus Room. This open-source project provides a set of APIs (Application Programming Interfaces) and communication protocols that allow browsers and applications to establish direct, peer-to-peer connections for efficient audio and video communication.

Steps to establish connection :-

- 1) **Initialization** : Browser Initializes the WebRTC
- 2) **Signaling** : Exchange session details through the signaling server.
- 3) **Peer Connection** : Direct Connection is established between peers.
- 4) **SDP Exchange** : Users exchange Session Description Protocol (SDP) through the Signaling Server, detailing media session information.
- 5) **STUN & TURN Servers** : STUN used for public IP identification and TURN for data relay in the presence of connection obstacles.
- 6) **Media Stream Transmission** : Real-time audio, video, and data streams flow directly between users using the peer connection.

In summary, WebRTC, in conjunction with a Signaling Server and TURN Server, ensures a robust and secure peer-to-peer connection for StudySphere users, facilitating efficient real-time communication within the Focus Room. The Signaling Server aids in session initiation, while the TURN Server acts as a relay when direct connections face obstacles.

C. Chat System

Upon logging in with registered credentials, users seamlessly navigate to the Chat System section, where the immersive experience of real-time communication unfolds. This dynamic interaction is facilitated through the integration of socket.io, ensuring instant messaging capabilities. The system leverages the power of sockets to establish a robust and responsive communication channel, allowing users to engage in fluid conversations within the Chat System. With each message sent or received, the platform harnesses the efficiency of socket.io to deliver a seamless real-time chat experience, enhancing user connectivity and fostering efficient communication.

Meanwhile, on the server side, a Node.js server with Express and Socket.io handles HTTP requests and manages WebSocket connections, providing the backbone for this immersive chat environment. The integration of Socket.io into

React or other frontend frameworks on the client side further enhances the user interface, ensuring a comprehensive and engaging real-time communication platform. Rigorous security measures, including user authentication and adherence to strict standards for file

uploads and multimedia sharing, are paramount to guaranteeing a safe and seamless communication.

D. Pomodoro Timer

The Pomodoro Timer module on StudySphere adopts the renowned Pomodoro Technique to optimize users' study sessions. As users initiate a study session, they can choose to employ the Pomodoro Timer, a technique that segments study time into focused intervals, typically 25 minutes each, followed by short breaks. The timer provides audible and visual signals, indicating the transition between work and break intervals, fostering a balanced and effective approach to study sessions. Users also have the flexibility to customize their work and break durations, allowing for a personalized study experience tailored to individual preferences.

This module not only promotes structured study habits but also accommodates users who benefit from periodic breaks for increased productivity. By seamlessly integrating the Pomodoro Timer into StudySphere, this technique becomes a valuable tool in maintaining focus, managing time effectively, and optimizing the overall learning experience for users on the platform.

E. Study Material

In the Study Material Access module, users, once authenticated, navigate to a well-organized Study Materials section where they encounter a user-friendly interface. This section provides access to a curated repository of educational resources, with materials categorized for easy exploration. Users can efficiently search and retrieve relevant study materials by specifying criteria such as subject or topic. Additionally, StudySphere encourages collaboration by allowing users to share study materials within their study domains, fostering a community-driven approach to resource sharing. The platform ensures compatibility with various file formats and implements version control for updated resources, creating a seamless experience for users to both access and contribute educational content tailored to their needs.

VI. System Graphical Interface

Fig 4 shows the Real time Chat System module in the GUI, enabling users to interact with one another. There are themes for both light and dark modes.

The Focus Room module's GUI is displayed in Fig. 5. Users are able to join any focus room. Certain rooms require authentication, while others are open to the public.

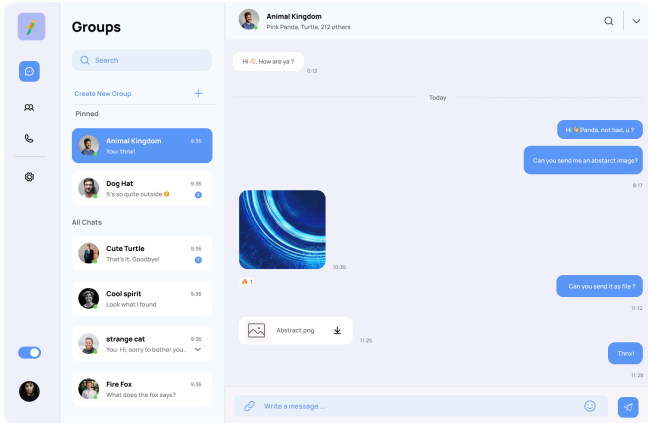


Fig. 4. Chat System

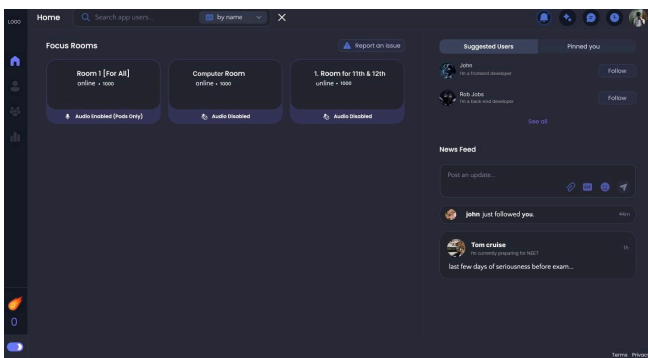


Fig. 5. Focus Rooms

VII. Conclusion

Studysphere represents a pioneering solution in the realm of education and productivity. By leveraging technology to create an immersive and personalized study environment, Studysphere caters to the unique needs and aspirations of students worldwide. The application not only facilitates enhanced focus and efficiency but also fosters a sense of community and collaboration among its users. With features that allow users to customize their study environments, manage tasks, and engage with a global community, Studysphere transcends the conventional boundaries of learning. Gamification elements and focus-enhancing features ensure that each study session is not only productive but also a rewarding and enjoyable experience. Studysphere envisions a future where learning is not confined to traditional classrooms, but extends into the clarity and punctuation where students can thrive in a supportive and engaging ecosystem. As the educational landscape evolves, the Studysphere is at the forefront of this transformation, empowering students to reach their full potential and achieve academic excellence. In a fast-paced and dynamic world, Studysphere stands as a testament to the power of technology in revolutionizing the way we approach

learning, and in doing so, it contributes to the growth and success of students on a global scale.

REFERENCES

- [1] Richard DuFour and Robert Eaker. *Professional Learning Communities at Work: Best Practices for Enhancing Student Achievement*. Solution Tree Press, 199
- [2] Michael Fullan. *The New Meaning of Educational Change*. Routledge, 2016.
- [3] Shirley M. Hord and William A. Sommers. *Leading Professional Learning Communities: Voices from Research and Practice*. SAGE Publications, 2008.
- [4] Louise Stoll, Ray Bolam, Agnes McMahon, et al. Professional learning communities: A review of the literature. *J Educ Change*, 7:221–258, 2006.
- [5] Watt, H. M. G. (2006). The role of motivation in gendered educational and occupational choices: A review of the literature. In J. S. Eccles & M. G. Watt (Eds.), *Development of achievement motivation* (pp. 121-145). Academic Press.
- [6] Zhai, Y. (2020). Facing the challenges of COVID-19 for international students in higher education: A literature review. *Journal of International Students*, 10(3), 248-263.